



PARKPLAZA

EINDHOVEN

---

# *Meetings and Events*

---

*All rates are subject to changes. For our current rates please contact our meetings and events team.*



40 Watt Boardroom



100 Watt Boardroom



Elite Lounge



Momoyama Restaurant



60 Watt Boardroom

# *Contents*

---

GENERAL INFORMATION .....	4
SOCIAL DISTANCING CAPACITIES .....	5
MEETING CAPACITIES .....	6
FLOOR PLAN .....	7
DELEGATE PACKAGES.....	8
REFRESHMENT BREAKS .....	9
DRINK AND FOOD SUGGESTIONS .....	10
LOCATION.....	11

# General Information

---

## OUR CITY CENTRE HOTEL

A sophisticated model of 21st-century accommodation, Park Plaza Eindhoven boasts a city-centre location within a 10-minute walk of the train station. Featuring 104 guestrooms with complimentary high speed Wi-Fi. Four on-site restaurants and a lounge provide fresh cuisine and refreshing drink options throughout the day.

Corporate travelers return to Park Plaza Eindhoven time after time for the impressive business services and meeting spaces, including two 75-person rooms and mouthwatering catering options. Event attendees planning an overnight stay can find plenty to do the next day with world-class shops, bars and attractions within walking distance. As one of the city's premier accommodation options, Park Plaza Eindhoven is ideal for business guests.

- Very convenient located, nearby Eindhoven Central Station
- 4 fully equipped meeting rooms with natural daylight for up to 75 people
- Four onsite Asian restaurants; Le Bua Plaza, Momoyama, Arigato and Wok Inn
- Facilities include a 24 hours fitness centre, a lounge bar, indoor swimming pool and two saunas

## REASSURING MOMENTS PROGRAMME

Park Plaza is fully focused on reassuring our guests, team members and local communities of our commitment to upholding an even higher standard of cleanliness and wellness with our Reassuring Moments programme which has been created in line with World Health Organization recommendations.

We are also proud to announce that through our partnership with Radisson Hotel Group, a new 20-step protocol for hotels and 10-step protocol for meeting and event spaces is in place across all of our hotels. Click [here](#) to find out more.

## RADISSON REWARDS

As a Radisson Rewards for Business member you can earn valuable points at Radisson Hotel Group properties around the world. Whether you're planning a conference or making travel arrangements for a colleague, as a planner you can earn points from every business booking and receive outstanding offers along the way.

- Earn 10 points for every US dollar spent on hotel stays
- Earn 5 points for every US dollar spent on meetings & events booked
- Join [now](#) and enjoy all the benefits from our Radisson Rewards programme

Awards include hotel nights in over 1100 Radisson Hotels worldwide, air miles, retail gift cards and charity donations. Please visit the [website](#) for our terms and conditions.



# *Social Distancing Capacities*

---

OUR NUMBER ONE PRIORITY WILL ALWAYS BE THE SAFETY AND WELLBEING OF OUR GUESTS AND TEAM MEMBERS. LEARN MORE ABOUT OUR REASSURING MOMENTS PROGRAMME.

A [10-step protocol](#) for meeting and event spaces is currently being introduced across all of our hotels. Our revised capacities, in line with local social distancing regulations, can be found below.

Room	Size WxLxH (M <sup>2</sup> )	Theatre	Board- room	U- Shape	Class- room	Cabaret
25 Watt Boardroom	8.0 x 7.0 x 3.0 (56)	8	8	6	8	6
40 Watt Boardroom	11.0 x 8.0 x 3.0 (88)	16	12	10	16	12
60 Watt Boardroom	11.0 x 8.0 x 3.0 (88)	16	12	10	16	12
100 Watt Boardroom	10.0 x 7.0 x 3.0 (70)		7			

# Meeting Capacities

---

PARK PLAZA EINDHOVEN PRESENTS FLEXIBLE, STATE-OF-THE-ART MEETINGS AND EVENTS FACILITIES WITH NATURAL DAYLIGHT.

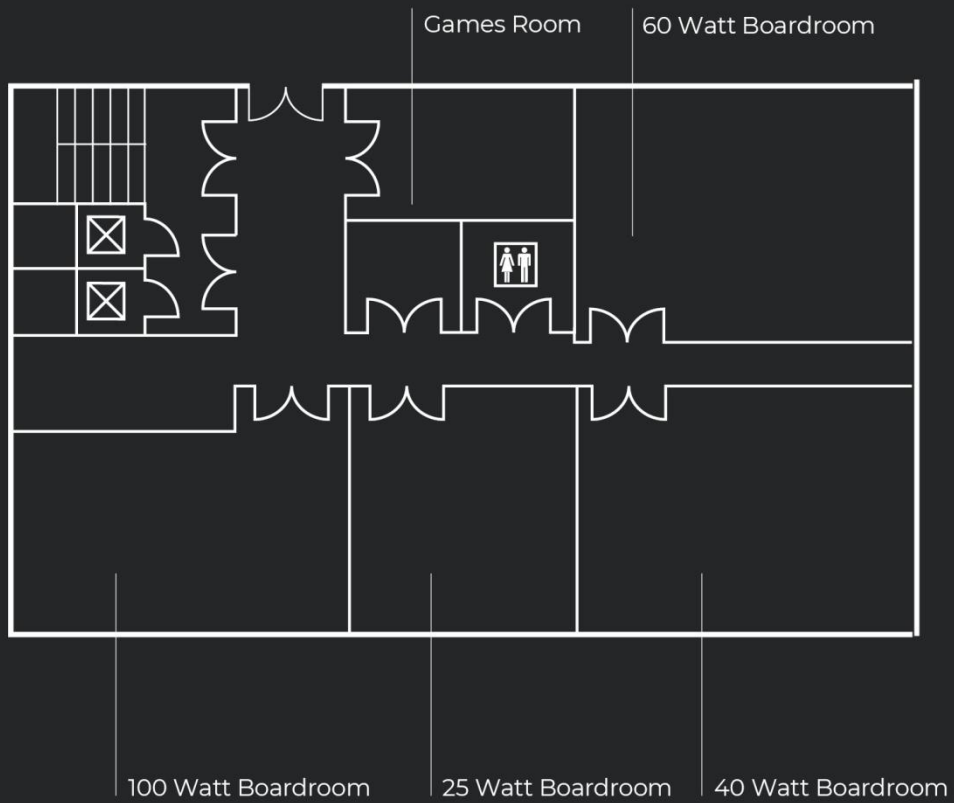
Choose from 4 fully equipped, professionally designed meeting spaces - giving you the necessary tools and space required to build your best event possible. All our meeting rooms are equipped with the following services, such as onsite technical support, smart TV's, projector screens, flipchart and complimentary Wi-Fi.

Room	Size WxLxH (M <sup>2</sup> )	Theatre	Board- room	U- Shape	Class- room	Cabaret
25 Watt Boardroom	8.0 x 7.0 x 3.0 (56)	30	20	15	20	25
40 Watt Boardroom	11.0 x 8.0 x 3.0 (88)	75	35	30	40	50
60 Watt Boardroom	11.0 x 8.0 x 3.0 (88)	75	35	30	40	50
100 Watt Boardroom	10.0 x 7.0 x 3.0 (70)		20			

# *Floor Plan*

---

## *Conference Floor*



# Delegate Packages

---



## FULL DAY DELEGATE PACKAGE (8 HOURS)

Our Full Day Delegate Package includes the following services and items:

- Comfortable meeting room setup
- Onsite technical support
- Projector, screen or LCD TV and one flipchart
- Complimentary Wi-Fi
- Pens, notepads and mints
- Unlimited mineral water, coffee, tea and cookies
- [Three breaks including pastries](#) (Welcome, morning and afternoon)
- [Sandwich lunch or buffet lunch served in the restaurant](#)



## HALF DAY DELEGATE PACKAGE (4 HOURS)

Our Half Day Delegate Package includes the following services and items:

- Comfortable meeting room setup
- Onsite technical support
- Projector, screen or LCD TV and one flipchart
- Complimentary Wi-Fi
- Pens, notepads and mints
- Unlimited mineral water, coffee, tea and cookies
- [Two breaks including pastries](#) (Welcome and morning or afternoon)
- [Sandwich lunch or buffet lunch served in the restaurant](#)



For our current prices please contact our meetings and events department by phone: +31 (0) 20 299 7742. You can also email your request to: [groupeindhoven@pphe.com](mailto:groupeindhoven@pphe.com).



# Refreshment Breaks

---

## **TAILOR YOUR EVENT**

---

You can add items to your Delegate Package to enhance your meeting experience or you could go for the room hire option and tailor your event with our refreshment breaks, lunch, reception and dinner suggestions.

## **UPGRADE YOUR MEETING (PER PIECE)**

---

Traditional cake	€ 2.00
Muffin / brownie / doughnut	€ 3.00
Carrot cake / apple pie	€ 3.50
Sausage roll / crudités	€ 3.50

## **TEA AND COFFEE PACKAGES**

---

### **HALF DAY PACKAGE € 9.50**

Unlimited tea and coffee  
Welcome break with pastries  
One coffee break in the morning or afternoon

### **FULL DAY PACKAGE € 17.50**

Unlimited tea and coffee  
Unlimited mineral water  
Welcome with pastries  
Two coffee breaks in the morning and afternoon

All breaks are served in the meeting room foyer.



# Drink and Food Suggestions

---

## LUNCH PACKAGES

---

### SANDWICH LUNCH **€ 17.50**

Included in the Delegates Packages. Available in our restaurant for up to 14 people.

Variety of different sandwiches (meat, fish or vegetarian)

One warm item

Side salad

Assortment of sweets

Milk, juices, tea and coffee

### BUFFET LUNCH **€ 21.50**

Available in our restaurant for groups of 15 people or more.

Freshly baked breads with cold cuts

Dutch cheeses, smoked fish and sandwich spreads

Salad bar and crudités with dressings

One warm item

Assortment of sweets and fresh fruit

Milk, juices, tea and coffee

## AFTER MEETING DRINK

---

One drink (beer/wine/soft drink), a traditional Dutch "bitterbal", nuts and olives for only **€ 6.50** per person.

## RECEPTION PACKAGE

---

### ONE HOUR RECEPTION

Dutch selection (beers/wines/soft drinks) **€ 12.50**

## BITES

---

Traditional Dutch "bitterballen"

Fried shrimps

Chicken nuggets

Vegetarian spring rolls

All served per portion (family-style) **€ 6.00**

## ONSITE ASIAN STYLE RESTAURANTS

---

Diners can choose from four Asian restaurants: Arigato, Momoyama, Le Bua Plaza and Wok Inn. Le Bua Plaza serves Thai cuisine, Arigato offers top-class Japanese cuisine and Momoyama serves teppanyaki where the chef prepares the dishes at the table. For quick dining and takeaway options, choose the Wok Inn restaurant that serves Chinese and Thai cuisine.

## LUNCH OR DINNER AT OUR ASIAN RESTAURANTS

---

For the current offering or rates, please contact our meetings and events team.



# *Location*

---

## **BY TAXI**

If you prefer to take a taxi from the airport, you can find a taxi at airport check-in or contact the reception at +31 (0) 40 214 6500 to reserve one in advance.

## **BY TRAIN**

Park Plaza Eindhoven is located in the city centre, just 10 minutes from Eindhoven Central Station. Therefore the hotel is easily accessible from Eindhoven Airport.

From Eindhoven Airport:  
Travelling by bus will take approximately 25 minutes. Take bus 400 or 401 to Eindhoven Centraal Station. When you arrive at the Central Station, take bus 170, 172 or 177. Exit the bus at the Hertogstraat stop.

## **PARKING**

Onsite parking available from €18.50 per day.

Rates are only available for guests attending a meeting and/or event.



**PARK PLAZA EINDHOVEN**  
Geldropseweg 17, 5611 SC Eindhoven  
T: +31 (0) 20 299 7742  
**GROUPEINDHOVEN@PPHE.COM**  
parkplaza.com